



*Franklin P. & Arthur W. Perdue Foundation*

# IMPACT REPORT 2019

*Making a difference  
in the communities  
where we live and work*

# DEAR FRIENDS

2019 was a banner year for The Franklin P. and Arthur W. Perdue Foundation. Our assets performed in tremendous fashion, our grants produced meaningful results throughout the footprint of the company and we prepared to celebrate Perdue's 100th Anniversary in very special ways in 2020. However, at the time of this report's generation in early 2020, our nation and world are faced with the unprecedented challenges of the COVID-19 pandemic. As a company and a philanthropic leader, Perdue and the Perdue Foundation strive to assure the health, nourishment and eventual recovery of our neighbors.

As we take a moment to reflect on the successes of 2019 at a time like this, it is heart-warming to know the Perdue Foundation remains focused on battering the communities where our associates live and work. Additionally, the Perdue Family's steady dedication to continuing the charitable legacy of their patriarchs is both moving and impressive. In total there were 252 grants awarded, equalling \$2,883,234. Some awards and activities worthy of highlight were:

- More than \$400,000 was awarded to organizations that fight hunger and poverty. The platform of ending hunger and delivering hope to our neighbors is not just a focus – it is a true mission of this organization.
- Healthcare in the communities that Perdue calls home was another focus of our grant-making in 2019. Nearly \$385,000 in grants to programs that assure that Perdue associates and their neighbors receive the best care possible is extremely important to our leadership.
- Public safety and community improvement projects have been a long-standing priority of the Perdue Foundation. Our founders, Arthur and Frank Perdue, believed in the value of volunteer fire departments and we remain dedicated to their legacy of giving to these and other important community assets. Some \$205,000 was contributed to projects and programs that protect and enrich the lives of our friends and neighbors throughout the footprint of our company.

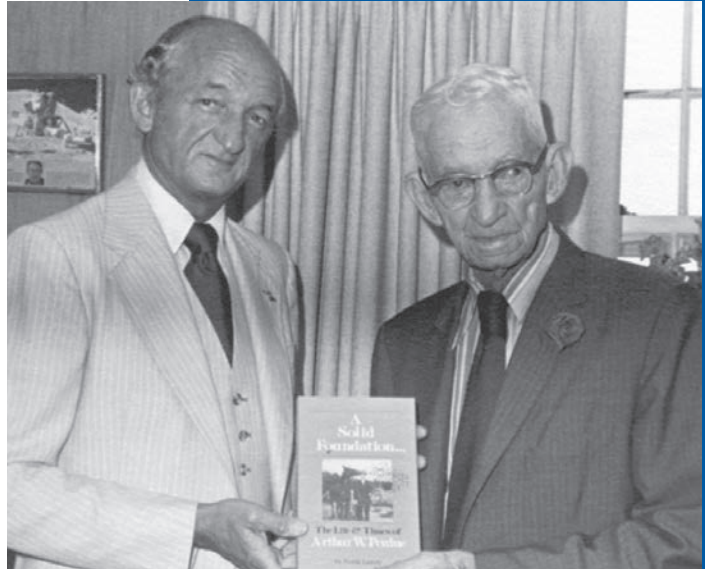
I welcome you to review the full impact of the Franklin P. and Arthur W. Perdue Foundation in the enclosed pages. The generous acts of 2019 are due to the philanthropic spirit of our founders, Arthur and Frank Perdue, and the stewardship of the Foundation's Board of Directors and the Perdue Family. It is our collective commitment to continue to assure the betterment of the communities that we are blessed to call home. I hope you enjoy this year in review.



Be Well and Best Regards,  
Kim R. Nechay  
Executive Director  
The Franklin P. and Arthur W. Perdue Foundation

# MISSION

The Franklin P. and Arthur W. Perdue Foundation supports the communities where Perdue Farms has facilities and where our associates live and work. The Foundation seeks to improve the quality of life in these communities by focusing its support in the areas of education, agriculture, the environment, health and social services, public safety and fighting hunger and poverty.



# HISTORY

Started in 1957 by Arthur W. Perdue, the initial mission of the Franklin P. and Arthur W. Perdue Foundation was to support the libraries and fire companies that served the areas where then Perdue Inc. had operations. Today, thanks to the generosity of the estate of Franklin P. Perdue, the Foundation now awards some 125 grants per year to benefit numerous organizations that better the communities that Perdue Farms calls home. With both Perdue family members and Perdue Farms associates on the Board of Directors and Grants Committee, the philanthropic spirit of the patriarchs of the family – Mr. Arthur and Frank – are continued while the corporate goals and philosophies of Perdue Farms are taken into consideration...a true blend of family and business values.



# ORGANIZATION BY T

## Franklin P. and Arthur V

A Touch of The Fathers Love  
Action For Aidan  
Alzheimer's Disease And Related Disorders Association  
American Red Cross  
Appalachian Habitat Association  
Ark Educational Consulting  
Art For The Journey  
Aspire Indiana  
Atlantic General Hospital  
Bay Area Lyme Foundation  
Bedford Lions Charitable Foundation  
Beebe Medical Foundation  
Boys & Girls Club Of Harrisonburg And Rockingham County  
Boys & Girls Clubs Of Metro Richmond  
Boys & Girls Clubs Of Southern Maine  
Boys & Girls Clubs Of Skagit County  
Bread Ministries  
Bridgewater College  
Cape Elizabeth Land Trust  
Center For The Inland Bays  
Chesapeake Housing Mission  
Chesterfield County Police Foundation  
Chesterfield Public Education Foundation  
Childfund International  
Chris Yung Elementary School Pto  
Christian Broadcasting Network  
Christian Shelter  
Church Schools In The Diocese Of Virginia  
Circle A Home For Horses  
Coastal Hospice  
Collegiate School  
Colonial Williamsburg Foundation  
Committee On The Shelterless  
Community Foundation Of The Eastern Shore  
Connors Heroes Foundation  
Conservation International Foundation  
Cromwell Community Development League  
Crotched Mountain Foundation  
Delaware Agricultural Museum Association  
Delaware Special Olympics  
Delaware Technical & Community College Educational Foundation  
Delmarva Teen Challenge  
Dorchester Chamber Foundation  
Dream Catchers  
Ducks Unlimited  
Eastern Shore Literacy Council  
Eastern Shore Public Library Foundation  
Elk Hill Farm  
Extraordinary League Of Gentlemen  
Feedmore  
First Baptist Church Of Midlothian

Fisher House Foundation  
Foodbank Of Southeastern Virginia  
Frontline Ministries  
Fund For Educational Excellence  
Georgia Mountain Food Bank  
Girl Scout Commonwealth Council Of Virginia  
Good Shepherd Food Bank  
Greater Salisbury Committee Foundation  
Gulf Of Maine Research Institute  
Habitat For Humanity International  
Heifer International Foundation  
Help 4 Kids Florence  
Helping Hands Of Hamlet  
Henrico Education Foundation  
Hillside Learning Center  
Hope And Life Outreach  
Integrated Refugee & Immigrant Services  
Johns Hopkins University  
Joshua M Freeman Foundation  
Junior Achievement Of Southwestern Indiana  
Junior Achievement Of The Eastern Shore  
Just1Mike  
Keep Georgia Beautiful Foundation  
Kent-Sussex Industries  
La Esperanza  
Lake Eldora Racing Team Association  
Leadership Delaware  
Liberation Veteran Services  
Lift Incorporated  
Little Sisters Of Jesus And Mary  
Lower Shore Land Trust  
Magi-Fund  
Main Street Gym  
Maine College Of Art  
Maine Jewish Film Festival  
Make-A-Wish Foundation Of America  
Manchester Boys And Girls Club  
Maryland Food Bank  
Medical College Of Virginia Foundation  
Mercy Center Foundation  
Mid-Atlantic District Of The Christian And Missionary Alliance  
Middle Georgia Community Food Bank  
Mind The Gap  
Mission Aviation Fellowship  
Monhegan Historical & Cultural Museum Association  
Monterey Depot Historical Society  
Mount Vernon Ladies Association Of The Union  
Nanticoke Watershed Alliance  
National FFA Foundation  
National Outdoor Leadership School  
Nature Conservancy



# ONS IMPACTED THE W. Perdue Foundation

Niman Ranch Next Generation Foundation  
Northern Neck Technical Center  
Northwood Elementary  
Ocean City Development Corporation  
Ocean Cleanup North Pacific Foundation  
Old Donation School  
Olympia Snowe Womens Leadership Institute  
Opera Maine  
Operation Blessing International Relief & Development Corp  
Operation Finally Home  
Parksley Volunteer Fire Department  
Parsonsbury Fire Company  
Partners For World Health  
Peninsula Regional Medical Center  
Portland Museum Of Art  
Poultry Science Association  
Powhatan High School  
Preble Street  
Georgetown University  
Promise Home  
R S Payne PTO  
Recovery Resource Center  
Redwood Empire Food Bank  
Regents Of The Mercersburg College  
Richmond Community College Foundation  
Richmond Montessori School  
Richmond Public Schools Education Foundation  
Salisbury Arts And Entertainment District  
Salisbury University Foundation  
Salisbury Urban Ministries  
Seatack Elementary An Achievable Dream Academy  
Second Harvest Food Bank Of Metrolina  
Seeds Of Peace  
Senator George J Mitchell Scholarship Research Institute  
Seven Arrows  
Shalom Farms  
Skagit Valley Hospitality House Association  
Somerset County Public School District  
Southside Elementary  
Southwest Radio Church Of The Air  
St Catherines School Foundation  
St Joseph Catholic School  
St Michaels Episcopal School  
Stanford University  
Susan B Anthony Project  
Susan G Komen Breast Cancer Foundation  
Sussex Community Crisis Housing Services  
Swim Ocean City  
Team Rubicon  
The Community Foundation

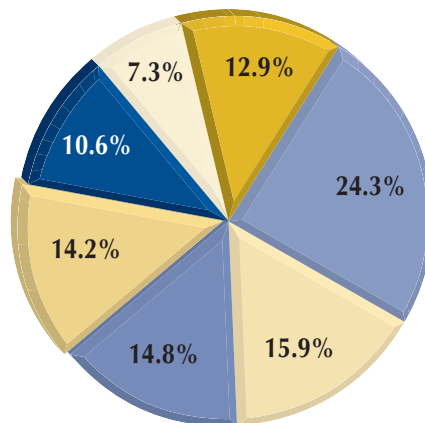
The Granite State Childrens Alliance  
The Navigators  
The Skagit Valley Family YMCA  
The UCLA Foundation  
The United Way Of Greater Waterbury  
Thomas C McSwain Elementary  
Thomas Jefferson Foundation  
Trap Pond Partners  
Tri County MLK Coalition  
Tri-County Council Foundation  
Trustees Of Dartmouth College  
Daviess County 4-H Association  
U Deserve A Chance Foundation  
United Way  
United Way Of Central Georgia  
United Way Of Central Indiana  
United Way Of Daviess County  
United Way Of Harrisonburg & Rockingham County  
United Way Of Hopewell Prince George  
United Way Of Knox County Indiana  
United Way Of Richmond County  
United Way Of The Lower Eastern Shore  
United Way Of The Ohio Valley  
United Way Of Virginias Eastern Shore  
University Of Delaware  
University Of Maryland Foundation  
University Of North Carolina At Pembroke Foundation  
University Of Southern Maine Foundation  
University Of Virginia  
University Of Washington  
Upreach Therapeutic Equestrian Center  
US Poultry & Egg Harold E Ford Foundation  
Veterans Writing Project  
Village Of Hope  
Virginia Historical Society  
Virginia Literacy Foundation  
Virginia Museum Of Fine Arts Foundation  
Voice Of The Martyrs  
Wallbuilder Presentations  
Ward Foundation  
Westover School  
Wicomico County Education Foundation  
Women Are Dreamers Too  
Worcester County G O L D  
World Pediatric Project  
Wor-Wic Community College Foundation  
Wounded Warrior Project  
Wythe County Technology Center  
Young America's Foundation  
Young Mens Christian Association Of The Chesapeake

The logo for the Perdue Foundation, featuring the word "PERDUE" in a bold, white, sans-serif font with a registered trademark symbol. The text is set against a blue rectangular background with a yellow swoosh underneath. The logo is tilted slightly to the right.

# Franklin P. and Arthur W. Perdue Foundation

Reporting Period: 01/01/2019 - 12/31/2019

Revenue	
Dividends	\$1,480,185.18
Interest	\$2,565.87
Realized Gains (Losses)	\$1,420,569.17
<b>Total for Revenue</b>	<b>\$2,903,320.22</b>
Grants	
Grants Paid	(\$2,883,233.89)
<b>Total for Grants</b>	<b>(\$2,883,233.89)</b>
Expenses	
Foundation Administration	(\$80,000.00)
Office & Supplies	(\$779.62)
Professional Services	(\$16,690.40)
Salaries, Wages and Benefits	(\$72,634.66)
Taxes	(\$20,100.00)
<b>Total for Expenses</b>	<b>(\$190,204.68)</b>
Change in Assets	
Opening Asset Balance as of 01/01/2019	\$52,038,938.40
Change in Unrealized Gain (Loss)	\$8,111,628.75
Net Revenue	(\$170,118.35)
<b>Closing Asset Balance as of 12/31/2019</b>	<b>\$59,980,448.80</b>



## Awards in Perdue Communities Address:

- Environmental and Agricultural Programs
- Community Improvement and Public Safety Initiatives
- Healthcare and Related Services
- Fighting Hunger and Poverty
- Social and Mentoring Programs
- Education and Literacy Programs
- Scholarship Programs







## FOUNDATION BOARD MEMBERS

Brenda Galgano

Anne Oliviero

Chris Perdue

Jim Perdue - President

Andrea Perdue

Kim Nechay – Executive Director

## GRANTS COMMITTEE

Kathryn Danko

Beverly Jennings

Sara Nida

Megan Oliviero

Jan Perdue

Jim Perdue

Sandra Spedden



*Franklin P. & Arthur W. Perdue Foundation*

Franklin P. and Arthur W. Perdue Foundation

PO Box 1537

Salisbury, MD 21802

410-543-3289

<https://www.perduefarms.com/company/foundation/>